



# DELAWARE VALLEY BICYCLE CLUB

P.O. BOX 497, MEDIA, PA. 19063

**FREE!**

November 1988

## VOTE



## MEETING

The monthly meeting of D.V.B.C. will be held on Monday, Nov. 7, at the Unitarian Universalist Church of Delaware County, in Media. The meeting begins at 7:30 p.m., doors open at 7:00. Be there!

## IF YOU DON'T USE A HELMET

...see page 7.

## OFF-ROAD RACING

page 16



# ELECTION '88

We are not referring to Bush and Dukakis. We're talking about some real class acts. Members of the Delaware Valley Bicycle Club (D.V.B.C.) will have the opportunity to exercise their right to vote for board members for the coming year.

Nominees to fill the ten positions on the Board of Directors of D.V.B.C. are:

Rich Patterson  
Carl Voight  
Don Ashbrook  
Jerry Cox  
Tom Brennan  
Donna Hox  
Hank Hox  
Bill MacNabb  
Bob Wright  
Frank Havnoonian  
Ted Kowalski

To cast your ballot, you must show up for the regular monthly meeting of D.V.B.C., which will take place on Monday, Nov. 7, at the Unitarian Universalist Church of Delaware County, 145 W. Rose Tree Road, in Media. Club members only may vote, but all are welcome to attend.

A few weeks ago, Shimano America Corp. held a seminar and dinner with the purpose of introducing its new line of components for 1988, including "Hyperglide" (...but I need warp eight, Scottie...) eight-speed freewheels and six Exage gruppings.

October 29-November 1 is the annual Interbike Expo in Atlantic City, where anybody who is anybody in the bicycle industry shows off their stuff for the coming year. I will be there, and so will Frank Havnoonian. If we see anything of interest, we will be sure to pass it on to our yearning fellow bike club members in the next issue.

**WEAR A HELMET!**

## Board of Directors

### President

Frank Havnoonian . . . . . 449-6154

### Vice President

Ted Kowalski . . . . . 622-1923

### Treasurer

Norman Griffiths . . . . . 356-5538

### Secretary

Bill Mulloy . . . . . 449-7801

### Members at Large

Don Ashbrook . . . . . 566-9142

Lois Atkins . . . . . 566-4001

Adrian Demarais . . . . . 566-6845

Steve Harriot . . . . . 565-7106

Leland Kowalski . . . . . 626-2093

Rich Patterson . . . . . 622-2954

Karl Voigt . . . . . 459-9129

## Ride Coordinators

### A/B Rides: Mike Keating

104 E. State St.  
Media, PA 19063  
891-9098

### C/D Rides: Ira Josephs

10 Applebough La.  
Rose Valley, PA 19065  
565-4058

*Please contact the Ride Coordinators  
before the 7th of each month.*

## DVBC Newsletter Staff

Editor . . . . . Greg Fox

Asst. Editor . . . . . Lisa Exten

Racing Editors . . Drew Christensen

Charles Cease

Frank Havnoonian

Rich Patterson

Special Events . . . . Rich Patterson

Advertising . . . . . vacant

Mailing Labels . . . . Lois Atkins

A/B Rides . . . . . Mike Keating

C/D Rides . . . . . Ira Josephs

Assembly . . . . . Frank Havnoonian

Triathlon Editor . . . . Lisa Exten

## Club Addresses

### Editor:

DVBC

c/o Greg Fox

64 Foster Ave.

Sharon Hill, PA 19079

586-9085

### Membership & Club Box

DVBC

P.O. Box 497

Media, PA 19063

### Special Events

DVBC

c/o Rich Patterson

527 Gainsboro Road

Drexel Hill, PA 19026

## Items for Sale & Ride Reports:

DVBC

c/o Lisa Exten

16-6 Valley Road

Drexel Hill, PA 19026

The views expressed in this publication are not necessarily the views of the Delaware Valley Bicycle Club, nor do we endorse products or services advertised.

Letters to the Editor must be signed to be considered for publication.

## Club Merchandise

Club T-Shirts . . . . . \$6.00

Club Car Decals . . . . . .50

Club Bike Decal . . . . . .25

Club Water Bottle . . . . . 2.00

Club Patches . . . . . 1.25

## DVBC Meeting Place

Unitarian Universalist Church of Delaware County, 145 W. Rose Tree Road (near Rt. 252 & Rose Tree Park). First Monday of each month. Doors open at 7:00 P.M. Public is welcome.

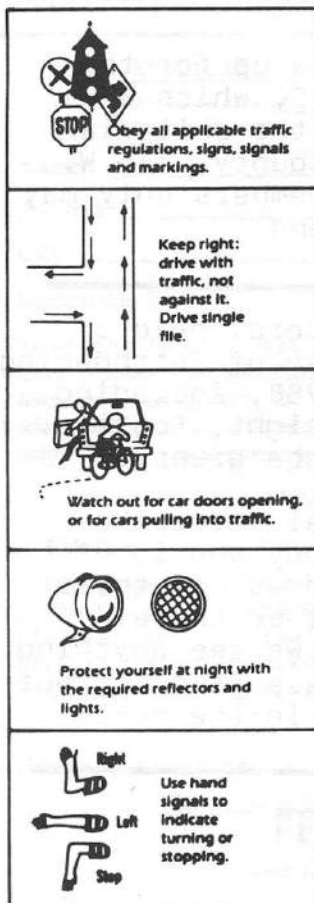
## Ride Guidelines

1. Arrive 10 to 15 minutes early and be **READY TO LEAVE ON TIME!** Rides will start no more than 5 to 7 minutes late!
2. Make sure your bike is in proper working order **BEFORE** you arrive.
3. Carry a spare tube, patch kit, pump and water bottle.
4. Practice safety and obey *all* traffic laws.
5. Wearing a helmet is usually not mandatory, but is encouraged. (A helmet is mandatory for all time trials and some Class A rides.)
6. Do not "bike off" more than you can do. Go on rides within your ability, interest and experience.
7. **RIDE CLASSIFICATIONS:**
  - CLASS D:** For new, inexperienced riders or families: speed 5 - 7 mph, frequent stops, as few hills as possible. Group will wait for all riders. Mileage usually less than 10 miles, but longer distances permissible.
  - CLASS C -:** For average riders: 7 - 8 mph, rest stops as needed. Group will wait for stragglers. Distance recommended: 10 - 30 miles.
  - CLASS C +:** Also average riders: 9 - 10 mph, rest stops every 45 - 60 minutes. No obligation to wait for stragglers if cue sheets or maps are provided by the ride leader.
  - CLASS B -:** For more experienced riders: 11 - 12 mph, stops every 15 - 20 miles. No obligation to wait for stragglers if cue sheets or maps are provided.
  - CLASS B +:** For strong riders: 13 - 15 mph, stops every 20 - 30 miles. No obligation to wait for stragglers if cue sheets or maps are provided.
  - CLASS A:** For very strong riders: 16 - 20 mph, stops every 30 - 50 miles. No obligation to wait for stragglers if cue sheets or maps are provided.
- TIME TRIAL:** Timed event. Again, you must obey all traffic laws. A hard helmet is mandatory. You must yield the right of way at all times. Club time trials should not be regarded as races, but as training rides.
8. Each rider assumes his/her own risk on all time trials and touring rides.
9. Those who ride ahead of the group are on their own ride.
10. Always notify the ride leader before leaving the group.
11. Ride leaders should adhere to the advertised speed of the ride.
12. Ride leaders are not expected to be bike mechanics.



**JOIN  
DVBC**

**NOTE:** In the case of questionable weather or road conditions, the Ride Leader may decide to cancel the event. Call the Ride Leader if in doubt. All Club rides are rated according to degree of difficulty. If you're in doubt about your cycling ability, try out a ride one class below the one you're not sure about and then work your way up. The general public is invited to all events organized and conducted by Delaware Valley Bicycle Club. A program is presented by the Club for bicyclists of all ages, all abilities, and all interests. Except for the Freedom Tour, Brandywine Tour and Club picnic, all club events are free to the general public. The general public is welcome!!!



# Ride Calendar

- 
- |  |  |
|--|--|
| <b>November 5 • 9:00 A.M.</b><br><b>Miles: 35-45 • Class C</b><br><i>Concord Twp./</i><br><i>Chateau Country</i> | Meet at the Grace Episcopal Church, 4900 Concord Pike, across from the Concord Mall in Wilmington, DE, just south of Rt. 92. Although easy-paced, expect some hills on this joint ride with Brandywine, White Clay and Valley Forge Bike Clubs. Bring lunch or buy food at the lunch stop. For more information call Roz or Dave Chasin at 302-478-1610. |
|--|--|
- 
- |   |  |
|---|--|
| <b>November 6 • Noon</b><br><b>Miles: 20-25 • Class C</b><br><i>Media Local</i> | Leave from the Media Courthouse (corner of Front St. & Veterans' Sq.) for this enjoyable autumn ride through the scenic countryside around Media. Call Frank Havnoonian (459-6154) Saturday night if you plan to go on the ride. |
|---|--|
- 
- |  |  |
|--|--|
| <b>November 7 • 7:30 P.M.</b><br><i>DVBC Meeting</i> | Doors open at 7:00, meeting begins at 7:30. SPECIAL TOPIC: Frank Havnoonian will discuss bike mechanics. Bring a friend and your mechanical questions. Unitarian Church, Rose Tree Rd., Media. |
|--|--|
- 
- |   |  |
|---|--|
| <b>November 12 • 3:00 P.M.</b><br><b>Miles: 12 • Class C/D</b><br><i>Freedom Tour + 4</i> | Meet at parking lot #15 in Ridley Creek State Park. Ride the Freedom Tour 8-miler plus four extra miles amid gorgeous fall scenery. A very safe ride as ride leader Michele Grant's dog will be riding shotgun. For more information call Michele at 461-5663. |
|---|--|
- 
- |  |   |
|--|---|
| <b>November 13 • 9:30 A.M.</b><br><b>Miles: 35-40 • Class B—</b><br><i>C &amp; D Canal Dirt Ride</i> | Leave from the only stop light on Rt. 9 in Delaware City, DE at 9:30 or meet at the Acme at Rt. 320 & Park Lane Road in Swarthmore at 8:30 to car-pool. Bring lunch for a stop at the Canal Museum. This is a pretty ride but is mostly dirt roads. Doug Kennedy: 543-4664. |
|--|---|
- 
- |  |  |
|--|--|
| <b>November 13 • Noon</b><br><b>Miles: 20-25 • Class C</b><br><i>Media Local</i> | Leave from the Media Courthouse (corner of Front St. & Veterans' Sq.) for this enjoyable autumn ride through the scenic countryside around Media. Call Frank Havnoonian (459-6154) Saturday night if you plan to go on the ride. |
|--|--|
- 
- |  |  |
|--|--|
| <b>November 16 • 11:00 A.M.</b><br><b>Miles: 12 • Class C/D</b><br><i>Freedom Tour + 4</i> | Meet at parking lot #15 in Ridley Creek State Park. Ride the Freedom Tour 8-miler plus four extra miles amid gorgeous fall scenery. A very safe ride as ride leader Michele Grant's dog will be riding shotgun. For more information call Michele at 461-5663. |
|--|--|
- 
- |   |   |
|---|---|
| <b>November 19 • 1:00 P.M.</b><br><b>Miles: 15-20 • Class C</b><br><i>South Jersey Ride</i> | Leave from Bridgeport School in New Jersey. (Cross the Commodore Barry Bridge and take Rt. 130 North, make first right onto Barker Ave., make next right onto Crown Point Rd. - Rt.44 and there's the school. Call Rich Patterson at 622-2954 for more details. |
|---|---|
- 
- |  |  |
|--|--|
| <b>November 20 • 9:30 A.M.</b><br><b>Miles: 20 • Class B</b><br><i>Off Road Ride</i> | Meet at parking lot #15 at Ridley Creek State park. Enjoy this vigorous tour of the park's trails. A good chance to work on bike handling skills and get a good cool weather workout. Pack a snack! Call John Neilon at 459-0545 for more information. |
|--|--|
- 
- |  |   |
|--|---|
| <b>November 24 • 8:30 A.M.</b><br><b>Miles: 10 • Class All</b><br><i>Thanksgiving TT</i> | This is White Clay Bike Club's annual Thanksgiving Day 10 mile Time Trial in Glasgow, DE. A great way to burn up some calories just in case you plan to eat later in the day. It meets at Frazer Road but call Rich Patterson at 622-2954 for exact location and further information. |
|--|---|
- 
- |  |  |
|--|--|
| <b>December 5 • 7:30 P.M.</b><br><i>DVBC Meeting</i> | Doors open at 7:00, meeting begins at 7:30. SPECIAL TOPIC: To be announced. Bring a friend—or make a new one. Meetings are held at the Unitarian Universalist Church, 145 W. Rose Tree Rd., Media. |
|--|--|
-



LIGHTWEIGHT SALES SERVICE  
RALEIGH 'DEALER OF THE YEAR'  
WE SUPPLY EVERYTHING  
FOR THE CYCLIST -- RACING  
OR TOURING

FOR ALL YOUR CYCLING REQUIREMENTS

AUTHORIZED DEALER FOR



**T. RALEIGH**  
**DREXEL**  
**HILL**  
**CYCLERY**

**Drexel Hill**

**CYCLERY**

**CUSTOM FRAMES  
BY H.H.**

FREE PARKING

EXPERT  
REPAIRING

**COACHING EXPERTISE BY FRANK HAVNOONIAN**

**See The Full Range of Aluminum Technium Bikes!**

SALES • SERVICE • TRADES  
WE SERVICE WHAT WE SELL

**626-4477**

703 BURMONT RD., DREXEL HILL  
CLOSED WEDNESDAY

# **PENNY FARTHING**

**BICYCLES**

**DELAWARE VALLEY'S MOST COMPLETE SHOP**

FUJI • BIANCHI • TERRY • ST. TROPEZ • GT • MONGOOSE  
• tools • parts • accessories • books & maps

**Largest Selection of Clothing in Delaware Valley**

- shorts & jerseys - over 1000 to choose from
- full ladies department
- helmets - 7 models
- shoes for racing or touring - 6 styles

**Car Racks to Fit All Cars - 4 Models**

26 So. Sproul Road (Route 320), Broomall, Pa 356-2280





## Urgent advice for bike riders

# Wear A Helmet, Save A Life

UNTIL THE EARLY AFTERNOON, June 10, 1987, was like any other late spring day for the Piatkowski family of Birmingham, Ala. Eugene and Beverley were at work. Their 16-year-old son, Eugene Jr., was riding the fancy bike that he had bought with his own money. In Alabama, June is hot—so the boy didn't wear his bicycle helmet.

About 20 minutes into the ride, while speeding down a hill, Gene Piatkowski hit a patched pothole and lost control of his bike. His unprotected head smashed into a telephone pole. The youth never regained consciousness. One week later, on his father's birthday, Gene died. Had he been wearing his helmet, the boy probably would be alive today.

Today, Eugene Piatkowski Sr. is a man with a mission. He wants the death of his only child to mean something. He wants advertisers to show bike riders wearing helmets. Virtually single-handedly, he is mounting a bicycle-helmet safety campaign in Birmingham. His efforts began at his son's funeral, when he asked mourners to skip the flowers

**BY DEBORAH BERGER**

and contribute to the Gene Jr. Memorial Helmet Fund. Posters and brochures with discount coupons for bike helmets will help get across his essential message: Wear a helmet and save a life.

Unfortunately, most riders don't follow this simple advice. Nationally, only about one percent of all children who ride bikes wear helmets, and most people killed in bike accidents die from head injuries. Other statistics are equally unsettling:

- Bicycle accidents kill more young children than poisons, falls or firearms.
- In 1986, 533 children 18 years of age or younger were killed in bike accidents involving motor vehicles, according to the U.S. Department of Transportation. (The department does not keep figures on fatalities in which no motor vehicle was involved, like that of Gene Piatkowski Jr.) Adults who died in such accidents numbered 398.

"If we had that many kids dying from a school sport, there would be a parental outcry," says Dr. Fred Rivara, a pediatrician and co-director of the Injury Prevention and Research Center at Harborview Medical Center in Seattle. According to a study conducted in Seattle by Rivara, bicycle helmets can reduce the risk of head injury by 75 percent.

The risks are not limited to those who bike on busy city streets: Children riding on bicycle paths, sidewalks and in parks also hit bumps and flip over the handlebars. Without proper helmets, accidents in these "safe" surroundings can cause serious head injuries.

"Anyone who falls from a bike has a 50-50 chance of hitting his head," says Dan Burden, State Bicycle/Pedestrian Coordinator for Florida. "Speed isn't really a factor. You can be going 5 miles an hour, but what's crucial is the angle of impact and the portion of your head you hit."

Tamara MacFarlan of Maple Valley, Wash., knows these awful facts firsthand. In April 1986, her son Matthew, then 7, was riding a bicycle down a steep hill in a state park when he lost control. "He flipped over the handlebars and smacked his forehead on the pavement," recalls Mrs. MacFarlan. "He was knocked out, his eyes rolled back. I started screaming."

Matthew was unconscious for several minutes. On the way to a nearby hospital, he suffered seizures. Flown by helicopter to Harborview Medical Center, he was in surgery for two hours. The doctors had to drain a blood clot between his brain and skull. They couldn't tell his mother if Matthew was going to live.

He did survive, but it hasn't been an easy time. For months, Matthew had problems in school. He forgot much of what he had learned. For a year, he had to take medicine to prevent seizures.

Today, two years after the accident, Matthew is doing better in school and even playing soccer. "It will be five

years before my son fully recuperates," says Mrs. MacFarlan.

Across the nation, various groups are working to make bicycle helmets the norm—not the exception. In Madison, Wis., for example, a public-education campaign for adults, offering rebates and prizes, doubled the sale of helmets. In Seattle, helmets were sold through PTAs at a reduced price. And in Florida, one program proposes a helmet be worn by any child who rides a bike to school.

So far, legislation is rare. In California, however, one law requires that children 4 years old or younger, or under 40 pounds, who ride as passengers on bikes wear helmets that meet either the ANSI (American National Standards Institute) or Snell standards.

But the last word on bicycle helmets belongs to parents like Tamara MacFarlan, who wants others to learn from her experience.

"Helmets are like getting in a car and putting on seat belts," Mrs. MacFarlan says. "My kids don't get in a boat without life jackets, and they don't ride their bikes without helmets. It's what I really believe in."

**How to buy a bicycle helmet.** Don't assume that every helmet in a store will protect your child—or you—because, right now, there are no government safety standards for helmets. Experts advise:

- Buy a helmet that is properly designed and tested for use on a bicycle. Do not use football, hockey or other helmets as substitutes.

- Be certain the helmet has a hard outer shell with a firm Styrofoamlike liner. (Springy foam may be added for comfort, but it doesn't absorb crash energy the way the firm lining does.)

- Make sure the helmet fits properly: It should protect the child's forehead and not tilt back. And the child should not be able to get it off without undoing the strap.

- Only buy helmets marked with an ANSI or Snell sticker, which means the helmet has been tested and meets certain safety standards.

- Choose colors that make you more visible, such as white, yellow or orange.

- Don't take even a small child riding without a helmet. "Babies under 6 months should not be carried on a bike," says Dr. Fred Rivara. But if you insist that your baby ride with you, be aware that children younger than one year may not have the muscle strength to support a helmet. Check with your pediatrician—and bring the helmet along. Also ask your doctor for advice about the safety of bike trailers and bike seats.

- If your helmet is in a crash, don't use it again. Buy a new helmet—and keep the old one as a reminder.

For more tips, send a business-sized SASE to: "Be Head Smart: Wear A Bicycle Helmet," The American Academy of Pediatrics, Dept. C, P.O. Box 927, Elk Grove Village, Ill. 60009. **EB**



# EDITORIALS

Thursday, August 18, 1988

THE TIMES HERALD, WEDNESDAY, AUGUST 10, 1988

## In Our View

### Run, Walk, but Don't Lollygag on Bikeway

Has anyone ever notice how many people ride bicycles for exercise these days? Or jog to the beat of radios attached at their hips? And how about all those walkers? They can be found in various sizes, shapes and ages.

Apparently, Conrail hasn't noticed. And neither have West Norriton Township officials. If they did they would surely step aside and provide a clear path for those who want to see the Schuylkill River bikeway completed.

It seems that officials from Conrail and West Norriton have been dragging their feet in separate negotiations needed to complete the scenic bikeway. The project, a joint effort of the Montgomery County Planning Commission and the Sierra Club, will connect 23 miles of trails from Independence Hall in Philadelphia to Valley Forge National Historical Park.

Philadelphia Electric Co. owns most of the land and has already granted an easement. But Conrail has been reluctant to give its permission for development of a mere 1.8 miles it owns in Whitemarsh Township and Norristown.

According to John Wood, project coordinator, the commission has been negotiating with Conrail since 1976. Conrail is concerned bicyclists will interfere with freight service in that area.

Meanwhile, in West Norriton, negotiations are continuing over township land PE owns that is needed for the trail. Township officials are complaining that the trail will force them to raise taxes to maintain it. Similar concerns were raised at last week's Conshohocken Borough Council meeting.

However, no such problems exist in Norristown. Just last Tuesday, groundbreaking ceremonies were held at Riverfront Park for a phase of the project that will take up 4.3 miles. The \$235,000 second phase will comprise two sections in Montgomery County: from Harry Street in Conshohocken to the Norristown-Plymouth Township border, and from Ford Street in Norristown to the borough's border with West Norriton Township.

If others are receptive to the idea, what's holding up Conrail and West Norriton? Don't they see that America is developing a mania for fitness, with bicycling, jogging and walking the most popular ways to get and stay in shape?

These officials need to recognize and address that. For those at Conrail, it should be a matter of public relations; for those in West Norriton, it should be a matter of public interest. Both are legitimate reasons to get on with the negotiations and get that trail blazed.

The bottom line, after all, is that people will use the trail. It would be foolish to stand in their way.

## The Times Herald

410 Markley St., Norristown, PA 19401

(215) 272-2500

Published Every Afternoon Except Sunday  
By Norristown Herald, Inc.

J. A. Peter Strassburger ..... President  
David S. John ..... Publisher, Exec. Vice President, Treasurer  
Carroll E. Shelton ..... William E. Sherman  
Editor ..... General Manager

## 4.3-Mile Phase of Bikeway Started At Riverfront Park

By JIM DEEGAN  
OF THE TIMES HERALD

Groundbreaking ceremonies were held yesterday at Riverfront Park in Norristown for a 4.3-mile phase of the Philadelphia-Valley Forge bikeway project.

The path's completion may be a long time coming, however.

According to project coordinator John Wood, it could take several years before cycling fanatics can pedal full throttle along the scenic route.

The proposed project along the Schuylkill, a joint effort of the Montgomery County Planning Commission and the Sierra Club of eastern Pennsylvania, would link 23 miles of trails from Independence Hall in Philadelphia to Valley Forge National Historical Park.

Wood said the Philadelphia Electric Co., which owns most of the riverside land, has granted an easement for construction and use of the trail, but Conrail has declined to give its permission for development of the 1.8 miles it owns in Whitemarsh

the county and the Schuylkill River Greenway Association, a Reading-based riverside improvement group.

Wood said the second phase will be completed within six to eight weeks.

Phase one was completed in 1979, and connected an existing 11-mile trail from Fairmount Park in Philadelphia with a 2.3-mile corridor from Port Royal Avenue in the city to Spring Mill Station in Whitemarsh Township.

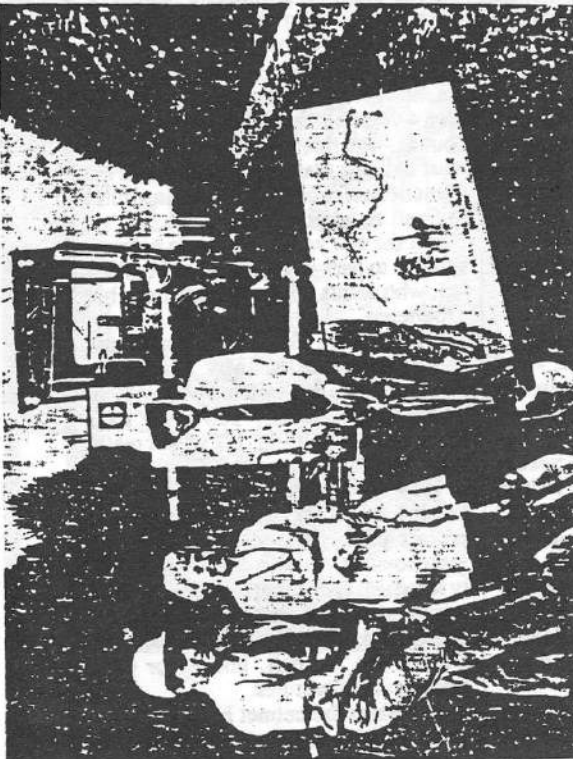
Co. "It owns the river side properties between Spring Mill Station and Harry Street in Conshohocken, and between Ross and Ford Streets in Norristown."

"We're trying to pick up the sections where Conrail still operates rail traffic," Wood said. "We're looking for any kind of access we can get, whether it be an easement or a lease agreement—anything."

The third and final phase of the project is a 4.5-mile stretch that includes development of Conrail's property and the final 3.1-mile link

Times Herald Photo by Bill Lewis  
Participating in yesterday's groundbreaking ceremony at Riverfront Park for the Philadelphia-Valley Forge bikeway are from left Joseph L. Vannoy, Norristown municipal administrator; Montgomery County Commissioner Betty S. Linter and the county commissioners chairman Paul B. Berle.

an agreement with West Norriton Township soon, so that sections of the trail can be developed. PE owns the area of Valley Forge National Historical Park. Wood said the planning commission hopes to reach





# 14th ANNUAL FREEDOM "Mega" TOUR!

8, 18, 35, or 65 mile routes

SPONSORED BY THE

Delaware Valley Bicycle Club

We the people...



...accept the challenge!



## 5-7-89

BIKE IT...  
...YOU'LL LIKE IT



## Sunday, May 7, 1989

A RECORD-BREAKING ATTENDANCE IS EXPECTED  
ONCE AGAIN! PART OF FUNDS TO BENEFIT THE  
BLUE ROUTE BIKEWAY/WALKWAY PROJECT!



### PARKING

Do **NOT** park  
your car on  
the grass in  
the park!!!  
Parking tick-  
ets will be  
issued by the  
park rangers.



Sign up  
here.



**TIME:** 8-9 AM for 65 milers; 9-10 AM for 35 milers; 10-11 AM for 18 milers;  
11-12 AM for 8 milers. (There is some flexibility in the starting times.)

**PLACE:** Ridley Creek State Park near Media, Pa. (PICNIC AREA #15)

**COST:** Just \$8 at the gate (or \$5.50 by pre-registering below!) (Children under  
age 17 are half-price if accompanied by an adult.)

**EXPECTED ATTENDANCE:** Possibly 900-1200 riders. (1000+ riders came to the '86 Tour!)

**SERVICES BY DVBC:** Food Stop, map or cue sheet, sags for bike mishaps, award patch,  
& marked route at each intersection of the routes.

**ROUTES:**

- The 65 mile route features a ride through the historic Brandywine River Valley, a covered bridge, and farm territory.
- The 35 mile route will also pass through the Brandywine River Valley which was the setting for Revolutionary conflict.
- The 18 and 8 mile routes include the scenic Chester Creek River Valleys and the beautiful Sweetwater Farm in Glen Mills. Roads are lightly traveled with rolling hills. (VERY POPULAR ROUTES!)

**DESCRIPTION:** You travel at your own pace, with family or friends, or better yet make new cycling friends. All ages, all abilities, and all types of bikes are welcomed!!

**RECOMMENDATIONS:** Use safe cycling habits! Helmet use is recommended but not required. Each rider must assume his own responsibility, and make sure their bicycle is in proper working order.

**ABOUT DVBC:** DVBC promotes all forms of cycling! Total membership exceeds 600 paid memberships. The club is affiliated with Bicycle USA (LAW), PA Bike Federation, USCF, Bicycle Coalition of Delaware Valley, & 5 County Coalition. DVBC is the premier bike club in Delaware County & is a non-profit corporation. This event is open to all bicyclists! Enjoy the early Spring Bicycling Season with DVBC.

**FOR MORE INFORMATION:** Please call Doug at (215) 543-4664 or  
Rollin' Rich at (215) 622-2954.

(TOUR WILL BE HELD RAIN OR SHINE!!)

### FOURTEENTH ANNUAL (1989) DVBC FREEDOM MEGA TOUR PRE-REGISTRATION FORM

Name: \_\_\_\_\_ Phone: \_\_\_\_\_ 65 miles: \_\_\_\_\_  
Address: \_\_\_\_\_ Age: \_\_\_\_\_ 35 miles: \_\_\_\_\_  
City: \_\_\_\_\_ State: \_\_\_\_\_ Zip: \_\_\_\_\_ 18 miles: \_\_\_\_\_  
How did you hear of the FREEDOM MEGA TOUR? \_\_\_\_\_ 8 miles: \_\_\_\_\_

PLEASE SEND THIS FORM WITH A CHECK OR MONEY ORDER FOR \$5.50 TO:

Delaware Valley Bicycle Club (If you are under 18, then your parent's or  
c/o Freedom Mega Tour guardian's signature is required on a  
P.O. Box 497 waiver/release form.)  
Media, PA 19063

**SAVE** by \$2.50 by pre-registering above! All pre-registration forms should be  
postmarked no later than April 29. Come on out to another DVBC Spectacular  
Event!! (Part of proceeds may go towards funding the Blue Route Bikeway.)







# BIKE LINE

**-SCHWINN- — RALEIGH- — TREK® — PEUGEOT-**

**PENNSYLVANIA AND DELAWARE'S LARGEST DEALER  
OVER 5000 BICYCLES IN STOCK**

**Clothing and Accessories for all Cyclists • Complete Repair Service Available  
Our New Name . . . Visit the location nearest you.**

**IN PENN.**

PAOLI  
Paoli Shopping Ctr.  
647-8023

WAYNE  
165 W. Lancaster Ave.  
687-1110

WEST CHESTER  
200 W. Gay Street  
436-8984

BROOMALL  
2619 West Chester Pike  
356-3022

EMMAUS  
831 Chestnut St.  
967-1029

ALLENTOWN  
1728 Tilghman St.  
439-1724

PHOENIXVILLE  
711 Nutt Rd.  
935-9111

NORRISTOWN  
122 W. Germantown Pk.  
275-4010

COLLINGDALE  
533 Mac Dade Blvd.  
583-7711

ARDMORE  
55 W. Lancaster Ave.  
649-9839

**IN DELAWARE**

NEWARK  
212 E. Main St.  
302-368-8776

WILMINGTON  
2900 N. Concord Pk.  
302-479-9438

DOVER  
595 N. Dupont Hwy.  
302-678-1772

PIKE CREEK  
Pike Creek Shop. Ctr.  
302-998-0202



Test ride a new 1988  
bicycle  
**TODAY!**

**serotta**

**GIANT**

**TREK USA**

**Blanchi**

**C&C CYCLERY**  
THE BICYCLE SHOP OF KENNETT SQUARE  
444-0399

520 SOUTH UNION STREET, KENNETT SQUARE, PA

WE HAVE CANOES TOO!  
Flatwater, racing,  
recreational, solo.

CAR RACKS: THULE, RHODE GEAR

ATB ALUMINUM FRAMES by KLEIN  
and other fat tire stuff!

**HOURS: Mon - Sat 10 to 6 pm Fri evenings til 8 pm**



# Search for a future led to death

## UNSOLVED MURDERS:

Victim: Kevin Grover, 32, of Londonderry, Vt.

Time & Place: Found in Haverford July 13, 1986; Died July 26, 1986, in Florida

Manner: Beaten

Kevin Grover packed his belongings onto a 10-speed bicycle two years ago and left his Vermont home to find his future in Florida.

He got as far as Haverford Township, where two strangers turned his campsite into a killing ground.

Before he died, Grover, 32, was able to give police little to work on.

"I spoke to him (Grover) the day we found him and several times later at the hospital," said township Criminal Investigator Philip Howe. "He couldn't remember anything at the hospital except that 'two guys did him in.'"

Grover couldn't describe his assailants and a doctor told Howe that Grover's severe head injuries — including a compound fracture of the skull — might prevent him from remembering until he recovered.

He discharged himself from Haverford Community Hospital six days later in the company of his brother Wallace, of Hobe Sound, Fla. Seven days later he died of brain injuries resulting from his beating.



JOHN ROMAN

NEWS FOCUS

"Because he is from out of state, it may hamper the investigation for someone coming forth," Howe said.

"If he was someone from the area, I feel we may have had more cooperation from individuals who know something about it," he said.

"There's somebody out there who knows something that could bring his killers to justice," he said.

On July 13, 1986, Grover's bloody, battered body was found at 8:03 a.m. in a wooded area about 150 feet from Township Line Road near Drexel Avenue after a resident of nearby Rodmor Road heard someone moaning and yelling for help.

Grover, who was intoxicated, had apparently crawled into his sleeping bag after the beating, Howe said.

In addition to his skull fracture, both of his eyes were

swollen shut, and he suffered facial fractures under both eyes and a broken finger of the right hand, police said.

He also had severe bruises of the shoulder and upper back.

Ironically, his wallet containing about \$80, his 10-speed bicycle and other belongings were not taken, virtually ruling out robbery as a motive for the beating, Howe said.

"He was brutally beaten ... literally left there to die," he said.

Grover was bicycling to the home of his married brother in Florida, where he planned to live until he found a job. He had survived hundreds of miles without an accident on the highway, but a stopover in a bar proved fateful.

Grover left Londonderry, Vt., on July 7 and was averaging about 100 miles a day on his bike.

The 5-foot, 10-inch tall, 150-pound, auburn-haired man "was in pretty good shape," police said.

"He would bed down in wooded areas along the way to save money, (and) had limited funds," Howe said.

He arrived in the section of the township abutting Drexel Hill, Upper Darby, on Saturday, July 12, and stashed his bike and sleeping bag in a densely wooded area off Township Line Road (U.S. Route 1), Howe said.

"And apparently from what we

can determine, he went to one of the bars along Township Line Road, where he apparently met two men," Howe said. It was north of the location from where he was found.

Later on, individuals accompanied him to his resting area, where he was laughing and drinking with them prior to his savage beating.

A woman who was visiting her mother at a nearby home that hot night couldn't sleep and got up about 1 a.m., Howe said.

She told police she heard voices of several persons and laughing coming from the woods. But she didn't pay any serious attention to it because she thought it was just a drunk at the known drinking hangout.

A short time later, she heard one of the people moaning.

However, it wasn't until seven hours later that another neighbor reported someone yelling in the woods and Grover was found.

Police believe he was attacked in the wooded area that night. He was fully clothed when he was found. He was wearing a black T-shirt, cut-off blue jeans and blue sneakers.

The Bicycle Coalition of the Delaware Valley has posted a \$100 reward as an inducement for any witnesses to come forward to assist authorities in their investigation.



KEVIN GROVER

"We do have strong leads about the individuals possibly involved, but we don't have enough evidence at this time to prosecute," Howe said, emphasizing "at this time."

"We are actively investigating any leads and would welcome any information — which will be held confidential," he said. Police can be contacted at 853-2400.

## Cyclist killed on Kelly Drive; driver charged

By Thomas J. Gibbons Jr.  
Inquirer Staff Writer

A bicyclist was struck and killed on Kelly Drive early last night by a drunken driver who fled the scene and was apprehended a short time later when his car struck a utility pole, police accident investigators said.

The accident occurred at twilight near the reviewing stands where spectators gather to watch water sports on the Schuylkill. Police said the cyclist, who was not immediately identified, was pedaling south on Kelly Drive when he was struck by a southbound car. The impact hurled the bicyclist into a street-light pole with such force that it shattered the overhead light, police said.

The motorist fled the scene, police said, but was apprehended when his car struck a pole on Brewery Hill Drive in Fairmount Park. The motorist, identified by police as Troy S. Hutchison, 26, of the 5300 block of North 15th Street in the Logan section, was charged with homicide by vehicle while intoxicated and related offenses.

The bicyclist was taken to the Medical College of Pennsylvania and Hospital, where he was pronounced dead on arrival shortly after 7 p.m.

Police said the victim was a white male in his mid-30s, about 5-foot-10 and weighing about 170 pounds, with brown hair and brown eyes. He was wearing a yellow shirt with figures of a walrus, a rabbit and a toad on it and blue biking shorts. The bicycle was a black Trek, police said.

## An illuminating priority

PHILA. INQ. SEPT. 88

For weeks now the street lights have been out along Kelly Drive. They've been out in long, dark stretches between East Falls and the Philadelphia Museum of Art, an invitation to nighttime muggings, to bicycle crashes, to auto accidents, to old-fashioned anxiety. An evening jogger called The Inquirer the other day to say he'd slipped and cut his arm in the dark. Bicyclists have a harder time seeing — and being seen. (In fact, though all the details are not known, a cyclist was fatally injured along the drive just last night.) It's a shame, especially when the gap-toothed lights on the Boat Houses are being replaced, spiffing up the river drive that seems to stay one short step ahead of utter neglect.

Over at the Streets Department, the

people in charge of street lighting aren't apologetic. They feel as if they've been taking it in the chops. Ninety-nine percent of the city's light bulbs are working or are fixed in a day or two by a contractor, they say. But the lamps on Kelly Drive have a wiring problem that requires city crews to go out with "bucket trucks."

The problem, they say, is that budget cuts have reduced the street-light brigade to 45 workers from a high of 60. Jobs that used to get done quickly now take 10 and 12 weeks. That's too long to wait, though, on a major — and winding — thoroughfare like Kelly Drive. Without knocking the department exactly — we understand the problem — we'd like to see them get the lights back on without further delay.

## Hit at accident scene 9/19/88

UPPER DARBY — A township man was struck by a car while directing traffic around an accident scene where an injured bicyclist was being treated by paramedics, officials said.

Charles Lord, 60, of the 400 block of Croyden Road, was struck on Lansdowne Avenue as he directed traffic around an ambulance and another vehicle following a mishap in the afternoon hours of Sept. 6, officials said.

The victim in the initial accident was identified as Moylan Shea Jr., 25, of the 3400 block of Albemarle Road, Drexel Hill. Shea was riding a bicycle on the concrete divider near State Road when he fell onto the side of a passing vehicle, officials said.

Paramedics from Delaware County Memorial Hospital were tending to the injured biker when Lord was hit, officials said.

Lord suffered a chest injury and Shea had a head injury. Both were treated and released from DCMH, officials said.



United Press International

Listen up, Philadelphia cyclists: Richard Rau says he gets more respect from motorists on his recumbent bicycle than on a regular mount. The Corvallis, Ore., man built the bike for the 14th annual Human-Powered Vehicle Speed Championships, held near Visalia, Calif.

## The Philadelphia Inquirer

An Independent Newspaper

Published Every Morning by Philadelphia Newspapers, Inc.  
400 N. Broad Street, P.O. Box 8263, Philadelphia, Pa. 19101

SAM S. McKEEL  
Publisher and Chairman

EUGENE L. ROBERTS JR.  
Executive Editor and President

DAVID R. BOLDT  
Editor of the Editorial Page

Wednesday, September 21, 1988

Page 22-A •

# IMPORTANT!

## ARTICLE XVI

### Personal Liability of Directors

Section 1. General Rule. A Director of the Board shall not be personally liable for monetary damages for any action taken or any failure to take any action, except to the extent that exemption from liability for monetary damages is not permitted under the laws of the Commonwealth of Pennsylvania as now or hereafter in effect. The provisions of this Section are intended to exempt the Directors of the Board from liability for monetary damages to the maximum extent permitted under the Pennsylvania Directors' Liability Act (42 Pa. C.S. 8361 et seq.) or under any other law now or hereafter in effect.

Section 2. Specific Rule Under Directors' Liability Act. Without limitation of Section 1 above, a director of the Board shall not be personally liable for monetary damages for any action taken or any failure to take any action, unless: (1) the Director has breached or failed to perform the duties of his office under Section 8363 of the Directors' Liability Act, and (2) the breach or failure to perform constitutes self-dealing, willful misconduct or recklessness. The provisions of the preceding sentence shall not exempt a director from: (a) the responsibility or liability of a director pursuant to any criminal statute; or (b) the liability of a director for the payment of taxes pursuant to local, state or federal law.

Section 3. Modification or Repeal. The provisions of this Section may be modified or repealed in accordance with the procedures for amending these Bylaws; provided, however, that any such modification or repeal shall not have any effect upon the liability of a director relating to any action taken, any failure to take any action, or events which occurred prior to the effective date of such modification or repeal.

## ARTICLE XVII

### Indemnification

Section 1. General Rule. Subject to the provisions of Section 2 below, the Board shall, to the fullest extent permitted under the laws of the Commonwealth of Pennsylvania as now or hereafter in effect, indemnify any person (and his heirs, executors and administrators) who was or is a party, witness or other participant, to any threatened, pending or completed action, suit or proceeding, whether civil, criminal, administrative or investigative (including, without limitation, actions by or in the right of the Association), by reason of the fact that he is or was a Director or Officer of the Board, or is or was

continued



serving at the request of the Board as a Director or Officer of another corporation, partnership, joint venture, trust or other enterprise, and may, to the fullest extent permitted under the law of the Commonwealth of Pennsylvania as now or hereafter in effect, indemnify any person (and his heirs, executors and administrators) who was or is a party, witness or other participant, or is threatened to be made a party, witness or other participant, to any threatened, pending or completed action, suit or proceeding, whether civil, criminal, administrative or investigative (including, without limitation, actions by or in the right of the Board), by reason of the fact that he is or was an employee or agent of the Board or is, or was serving at the request of the Board as an employee or agent of another corporation, partnership, joint venture, trust or other enterprise, against all expenses (including attorneys' fees, court costs, transcripts costs, fees of experts and witnesses, travel expenses and all other similar expenses), judgments, fines, penalties and amounts paid in settlement actually and reasonably incurred by him in connection with such action, suit or proceeding.

Section 2. Standard of Conduct. Indemnification shall be provided under Section 1 above only if it is determined that: (a) the person seeking indemnification acted in good faith in a manner he reasonably believed to be in or not opposed to the best interests of the Board; and (b) the act or failure to act giving rise to the claim for indemnification does not constitute willful misconduct or recklessness. Notwithstanding the foregoing, no person shall be indemnified in any case where the act or failure to act giving rise to the claim for indemnification is determined by a court to have constituted willful misconduct or recklessness.

Section 3. Procedure. Indemnification under Section 1 above (unless ordered by a court) shall be made by the Board only as authorized in the specific case upon a determination that indemnification is proper in the circumstances because the person seeking indemnification has met the applicable standard of conduct set forth in Section 2 above. All such determinations shall be made by the Board of Directors.

Section 4. Advance Payment of Expenses. Subject to such terms, conditions and limitations, if any, as the Board of Directors may in its discretion determine to be appropriate, the Association shall (in the case of a Director or Officer) and may (in the case of an employee or agent) advance all reasonable expenses (including attorneys' fees, court costs, transcript costs, fees of experts and witnesses, travel expenses and all other similar expenses) reasonably incurred in connection with the defense of or other response to any action, suit or proceeding referred to in Section 1 above upon receipt of an undertaking by or on behalf of the person seeking the advance to repay all amounts advanced if it shall ultimately be determined upon final disposition of such action, suit or proceeding that he is not entitled to be indemnified by the Association under the provisions of this Article. Notwithstanding the provisions of the preceding sentence, the Board shall not be required to make any advance payment of expenses (or to make any further advance if one or more advances shall have been previously made) in the event that a determination is made by the Board of Directors that the making of an advance or further advance would be inappropriate in the circumstances because there is reason to believe that the person seeking the advance did not meet the applicable standard of conduct set forth in Section 2 above.



# CYCLE & RECYCLE

1989 — 1995 — 2006

Fahrrad und Arbeit

(The Bicycle and Work)



A new "Cycle & Recycle" calendar for 1989, published jointly by nine bicycle advocacy groups in the U.S., Canada, Switzerland, West Germany, Austria, and England is now available. The 11x17 inch wall calendar features a full-color cover, captions in English and German, and provocative quotations and illustrations (among them many bicycle postage stamps) throughout.

The calendar celebrates the efficiency of the bicycle as a "workhorse"—whether in overdeveloped countries, where it is increasingly used by police, postal workers, and everyday commuters, or in underdeveloped countries where it is accessible to families, artisans, para-medics, and to the millions who can realistically aspire to bicycle ownership. The calendar includes remarkable photos of the bicycle at work in ten countries, from the busy streets of Seattle, Toronto, Basel, and Mexico to the dusty roads of China, Mali and Bangladesh. The calendar also saves us trees and paper, usable again in the years 1995 and 2006 when the 1989 calendar "recycles."

To order, use the order blank below, enclosing a check or money order (U.S. dollars only, please) payable to Bicycle Coalition. Calendars are \$6 each; 4 to 9 copies, \$5 each; 10 or more, \$4.50 each. All prices are postpaid. Mail to: Bicycle Coalition, P.O. Box 8194, Philadelphia, PA 19101.

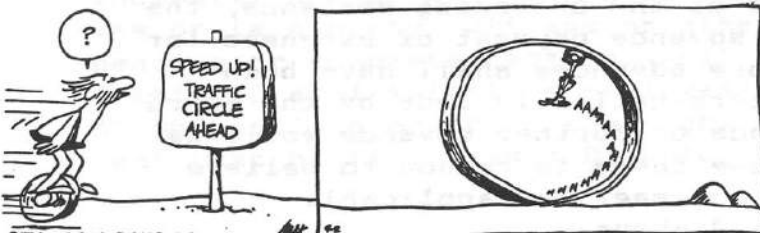
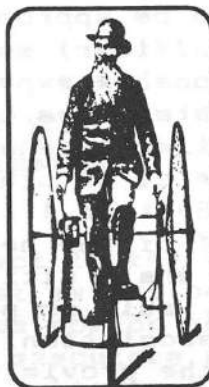
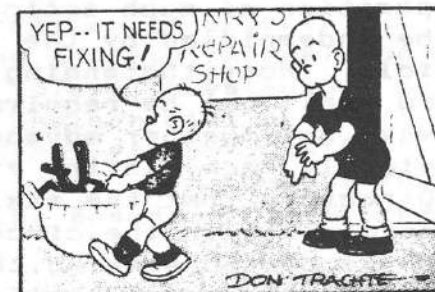
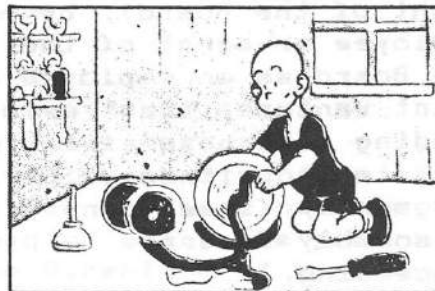
NAME \_\_\_\_\_

STREET ADDRESS \_\_\_\_\_

CITY, STATE, POSTAL (ZIP) CODE \_\_\_\_\_

COUNTRY \_\_\_\_\_

NUMBER OF CALENDARS ORDERED \_\_\_\_\_ U.S.\$ ENCLOSED \_\_\_\_\_



# SPECIAL EVENTS

JOIN  DVBC

## Iron Hill Challenge Off-Road Racing Series

The series is tentatively scheduled to start Sunday, November 6th and run through December 11th. Start time for the first race is 1:00, Registration will open at 12:00.

**Race schedule:** 1:00 - Citizens Race, 10 to 12 miles, Open to anyone except for licensed USCF riders.  
2:00 - USCF Race, 18 to 20 miles, Open to USCF riders only.

**Entry Fee:** TBD

**Course Description:** Three mile circuit through, woods, mud, over hills, over logs, short steep descents, short steep climbs, and dismounts. The course will change weekly to offer new and exciting challenges like Grand Prix Starts, time and point bonuses for hill climbing and obstacle clearing. There will be a few obstacles that are required dismounts, so be prepared to hoof it! The course will be suitable for either mountain bikes or cyclocross bikes.

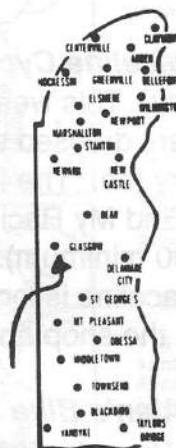
**Location:** Iron Hill County Part, (Permit is pending), South of the 895 and 195 intersection near Newark, Delaware.

**For further information:** Contact Monty McNeil at 998-6142 (evenings only) after October 1st or look for information in Velo News, Tailwind and at your local bike shop.

Some help will be needed to run the series if you are interested contact Monty McNeil at 998-6142. If there is interest in having observed trials events then contact Monty at the number above.

Happy trails! Be sure to treat the trail and the hikers, horseback riders and people you meet on the trails with courtesy. See you in November.

November 19-27 - NICARAGUA BY MOUNTAIN BIKE, TOUR DE CAMA. Signup by August, call 215-222-1253 Jon Dowlin or write PO Box 7293, Philadelphia, PA 19101.



*Delaware*



**THANKSGIVING DAY**

## Thanksgiving Day

ANNUAL THANKSGIVING DAY 10 MILE  
TIME TRIAL

HOSTED BY WHITE CLAY BICYCLE CLUB-  
FIRST STATE VELO SPORT

LOCATION: FRAZER RD., Glasgow, DE.

TIME: 8:30 AM. SHARP!

FOR DIRECTIONS, CALL: DVBC's MR.  
TIME TRIALS, Rollin' Rich  
Patterson at 215-622-2954

## gearing up

### LAW GEARS and National Rallies

At GEAR in June the League of American Wheelmen announced the sites for 1989 and 1990 bike rallies.

GEAR '89 June 16 - 19 at Saratoga Springs, New York  
Hosted by the Mohawk-Hudson Wheelmen

1989 National Rally June 30 - July 4 at Salisbury, Maryland  
Hosted by the Salisbury State University Bicycle Club

1990 National Rally July 4 weekend at Slippery Rock, Pennsylvania  
Hosted by the Western Pennsylvania Wheelmen and the  
Out-spokin' Wheelmen  
Put these dates on your calendar today.

### 1989 RIDE SCHEDULE

Get out the new calendars and note these dates:

Icicle Century Dave Bundas	Sun Mar 19
Tri-State Century Brian Hanson	Sat May 13
Double Century	Sat June 24
Double Cross John DeGood	Sun July 2
Twin Century Wally Hertler	Sat - Sun Sept 30 - Oct 1
Savage Century	Sat Oct 7

WHITE CLAY BICYCLE CLUB'S 1989  
MAJOR EVENT SCHEDULE



THE CLOCK'S RUNNING AWAY!  
DON'T FORGET THE ANNUAL  
THANKSGIVING DAY TIME  
TRIAL: FLAT AS A PANCAKE!  
THAT'S THE DAY FOR ALL  
WHIPPER SNAPPERS TO SHOW  
THEIR STUFF- NO NOT TUR-  
KEY STUFFING-



Sunday, April 16, 1989: TAXING METRIC  
CENTURY. Info: Brandywine Bicycle Club,  
Stu Baird, (215) 783-0536.

Saturday, August 12, 1989: DOG DAZE  
CENTURY. Info: Brandywine Bicycle Club,  
Mike Stull, (215) 793-2341.

**GEAR UP**

June 16-19th, 1989 - GEAR UP '89 Skidmore College, Saratoga Springs, NY, sponsored by LAW, hosted by Mohawk-Hudson Wheelmen, contact: GEAR '89 SARATOGA, PO Box 127, Albany, NY 12260, or Mohawk-Hudson Wheelmen, P.O. Box 5230, Albany, New York 12205.



## **Iron Hill Challenge Off-Road Bicycle Racing Series**

*promoted by First State Velo Sport*

**November 6th, Week 1 - Paceline Cycle Center presents "PSYCHO-PATH"** You thought that Halloween was over? No Way! This week's race course on the paths of Iron Hill County Park may drive you **PSYCHO!** All racers dressed and competing as their favorite Halloween character get a special discount on their entry fee. The first race of the series will bring back the course from last year, voted "Most Likely To End My Racing Career". Paceline will be at the race providing mechanical support and awards (\$200 minimum). Paceline offers a complete lineup of Cannondale, Miyata and Specialized bicycles. Paceline is located in the Peoples Plaza Shopping Center at Rt. 4 and 896, (302) 834-1156. Come in to the shop and see their November specials.

**November 13th, Week 2 - Alan's Bike Shop presents "Wicked Fat Tire Challenge"** This race will be "**WICKED**" /wik-id/ adj. [fr early 1900's] 1a: impressive b: excellent in any way; [teenagers] 2a: awesome b: gnarly c: wonderful; 3: [original cool use] so satifying that one becomes exhausted; = BAD, GREAT; a.k.a. bitchen, def, way cool; 4: wicked, as in **WICKED FAT CHANCE Mountain Bikes**. Alans will be sponsering this weeks race by providing awards (\$200 minimum), mechanical assistance and showing off some of their wickedest off-road cycling merchandise. Come out and see a **WICKED FAT CHANCE** for yourself along with Alan's Special Shifting System a.k.a. A.S.S.S. Alan's has two locations; 490 Lancaster Ave., Frazier, Pa. (215) 296-7999 or 4723 Concord Pike, Wilmington, Del. (302) 478-0990.

**November 20th, Week 3 - C&C Cyclery and Team Vitesse presents "HERR'S Off-road Challenge"** This race will give you the opportunity to burn up those tasty Herr's potato chips. The "BEST" of Iron Hill will be featured in today's race. Expect a lot of up's and downs. C&C and Team Vitesse will be running todays race and providing the awards (\$300 minimum) mechanical support and displaying the newest in TREK and Off-Road Pro Mountain Bikes. C&C Cyclery is located in Kennet Square at 520 S. Union (215) 444-0399. Come on in or give Cindy or Clyde a call.

**November 27th, Week 4 - Henry's Bike Shop presents "Tour de Mud"** Henry has promised a week of rain to specially prepare the course for this race. This weeks racing will be highlighted by a special Iron Man Division in each of the races. What is a Iron Man? One who has only one gear. Iron men must compete on single speed bikes over the same course as the deraileur equiped bikes. Come on out and see these Iron guy's or girl's hammer up Iron Hill's short steep climbs. Henry's will be providing the awards (\$200 minimum). Come on into Henry's shop where they promise to "Sell the Best and Repair the Best". All racers will recieve 25% off on jerseys. Henry's bike shop offers a full line of Specialized, Fuji, Mongoose and Diamond Back mountain bikes. Henry's is located at 2901 Lancaster Ave., Wilmington, Del. (302) 654-0361.

**December 4th, Week 5 -Bike Tech presents "PSYCHOCROSS"** You don't have to be crazy to try this race! Sponsored by Bike Tech this weeks racing will consist of a cyclocross style course with plenty of barriers to leap over. Bike Tech is providing the awards for the final race of the series. Bike Tech is the home for one of the top regional Cycling Teams **Quaker City Wheelmen/The Philadelphia Racing Team**. Bike Tech has three stores; Phil. Pa. (215) 735-1503, Bryn Mawr, Pa. (215) 527-6449 and Doylestown Pa. (215) 348-8015.



## DON'T FENCE ME OUT!

How would you react if told that a beautiful and challenging park road overlooking a nearby river and having numerous stopping points with sandy beaches is restricted to bicyclists? What would you say if this restriction forced you to opt for a heavily trafficked state highway if you wished to pedal this area? What would you do if you found out this scenario existed within the confines of your general bike riding area?

If you're not already aware, the above applies to the Henry Hudson Drive, a pristine woodland road in Palisades Interstate Park in New Jersey along the Hudson River. Except for weekend and holiday mornings, it is closed to cyclists (and walkers) between April 15 and November 1.

The Drive is maintained and administered by the Palisades Interstate Park Commission (P.I.P.C.). It is the Commission that has imposed the restrictions in the name of safety, citing standards established by the NJ Department of Transportation for mixed traffic. Additionally, the approach roads are never legally open to bicyclists - the only way to bike on the Drive, even during "legal" weekend mornings or in late fall and winter, is to bring a bike by car!

The BTCNJ Board has agreed to pursue solutions to this ruling in concert with Transportation Alternatives (T.A.), New York city's largest member-supported organization working to promote bicycling. T.A. is presently arranging a meeting to include representation from bicycling clubs as well as P.I.P.C., and NY and NJ state officials.

How can you help? Send letters supporting bicycle access to Henry Hudson Drive to: NJ Governor Thomas Kean, Statehouse, Trenton, NJ 08625; NY Governor Mario Cuomo, Executive Mansion, Albany, NY 12224. Please also send a copy to Cliff Shoemaker, Leg. Action Chairman, 476 Heath Place, #28, Hackensack, NJ 07601  
-- Nate Morgenstern



## SAFETY

### BIG BAD BUNCHES

There may be excitement in being part of a mob, but a long line of cyclists is a nuisance to motorists and a hazard to the riders. When the turnout is large, it's a good idea for riders to separate themselves into groups of 4 or 5, allowing enough space between groups for cars to pass in "leap-frog" fashion. This courtesy to motorists is really needed on winding roads, and ups the safety factor anywhere. Also, if the unthinkable happens and someone falls, fewer riders will be involved if the group is divided.

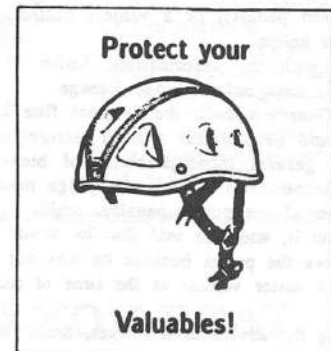
So what do you do if you're number 6? Just soft pedal until you're a few car-lengths behind number 5. It's good press, and it's safe cycling.

### THREE'S A CROWD--ANYWHERE

State law requires that we ride single file, or not more than two abreast when traffic allows. Yes, the law applies to backroads.

### CAR BACK = SINGLE FILE

When you hear the warning "car back" pass it on, and move to the right (if you're not already there). When riding double, the right line should open spaces for the left line to merge into. With good riders, it's quite a beautiful maneuver to watch from behind.



### DVBC SAFETY FOUNDATION DONATION FORM

I, \_\_\_\_\_,  
(Print Name)  
do hereby wish to donate the following  
(\$1,\$2,\$3,\$5,  
\$10,\$15,\$20)  
to the DVBC Safety Foundation!  
Mail to: DVBC,  
P.O. Box 497,  
Media, PA 19063  
**THANK YOU!**

Bicycle Coalition of the Delaware Valley  
P.O. Box 8194  
Philadelphia, PA 19101

(215)BIC-YCLE

## Red Light Alert

On April 1, 1988, Steve Smith (not his real name) was pulled over for running a red light on his bicycle. He knew he was in the wrong and fully expected to get a ticket and be assessed a fine. What he didn't expect was a fine in amount of \$52.50 and a statement from the arresting officer that he would receive three points on his driver's license.

Angry and suspicious, Smith did some research. He started with the *Pennsylvania Bicyclist's Guide* (published by the Pennsylvania Department of Education)\* which advised him to look up Section 3502 of the Motor Vehicle Code of Pennsylvania. Turning to Section 3502 (part of the Bicycle Code) he read:

Any person violating any provision of this subchapter [which states, essentially, that a bicycle rider must obey traffic regulations.] is guilty of a summary offense and shall, upon conviction, be sentenced to pay a fine of \$10.00.

On the question of receiving points on his driver's license, Smith looked up Section 1535(D) of the Motor Vehicle Code which read:

[Assignment of points to a driver's license] does not apply to a person who is operating a pedalcycle [(a vehicle propelled solely by human-powered pedals)] or a vehicle pulled by an animal.

Armed with this information, Smith pleaded his case before Judge George Twardy. Twardy upheld the original fine assessment and gave Smith a stern lecture about the general incompatibility of bicycles and automobiles. (When the judge made no mention of the points penalty, Smith asked about it, and was told that he would not receive the points because he was not operating a motor vehicle at the time of the arrest.)

Heeding the advice of a lawyer, Smith decided not to appeal his case. Interpretation of Section 3502 is not as straightforward as it may appear to a layperson, he was told, and given the leanings of the appeals judge, he stood little chance of a favorable ruling.

Smith's advice lawyer and some coalition members believe that the fight for establishing unambiguous fines for bicyclists is in the legislature. Other BCDV members believe the fight is in the courts. In either case, this is a matter in need of attention over the next year.

Membership in the Bicycle Coalition of the Delaware Valley includes a subscription to *Cyclegram*, the coalition's quarterly newsletter, discounts at over 20 bicycle

shops, invitations to coalition special events, as well as expert help from the coalition's touring, racing, commuting, and legal advisors.

## MEMBERSHIP APPLICATION

Name \_\_\_\_\_  
Address \_\_\_\_\_  
City \_\_\_\_\_ State \_\_\_\_\_ Zip \_\_\_\_\_  
Phone \_\_\_\_\_  
Membership dues: \$15.00 Single  
\$20.00 Family

Sign me up to help with:

- ☐ Adopt-an-Agency
- ☐ Newsletter
- ☐ Making telephone calls
- ☐ Leafletting
- ☐ Bicycle parking development
- ☐ Outreach to organizations/companies
- ☐ Roadway and traffic design
- ☐ Access to public facilities
- ☐ Instruction for bicyclists
- ☐ Other: \_\_\_\_\_

Please send me the following (available through coalition membership):

- ☐ The Bike Commuter Map (\$5.00)
- ☐ Bottle Bill T-shirt (\$6.00) (Specify tan or blue, s/m/l.)

Mail this form along with a check to  
BCDV, Box 8194, Phila., PA 19101.



## Herman



"Gee, hasn't that DVBC biker passed by our house yet?"

## HERMAN



"I understand Albert Einstein spent most of his life trying to get elected."

\* REMINDER: Don't forget to \*  
\* come to DVBC's November 7th \*  
\* Meeting to cast your vote \*  
\* for DVBC's 1989 Board Mem- \*  
\* bers. Show your support! \*



# TRIATHLON 1988

## Ironman Bravo pursuing his dream

I don't know about you, but whenever I get bored I usually bop on down to the shore for a quick 2.4-mile ocean swim, then whip out the old 10-speed bike for a brisk 112-mile trek, and finally — just for something a little different — I run your basic 26.2-mile marathon.

Yes sir, that shakes the old doldrums out of my system every time.

...

OK, so I lied.

The truth is, I'd be bushed after the drive to the shore. But as unfathomable as the above events might seem to mortals like us, some guys actually do that stuff. Guys like Dave Bravo, the former Haverford High and Ursinus College athlete, who will be flying off to Hawaii next month to compete in the 1988 Bud Light Ironman Triathlon World Championship.

Bravo, 25, will be joining approximately 1,250 other top-caliber endurance triathletes from 48 states and 38 countries as they push themselves to the very brink of their physical and mental boundaries.

Then they push a little more.

What I want to know is why.

What could possibly drive a human being into such a frenzied state of mind? Wouldn't it be easier to throw yourself out of a third-story window? The end result would be about the same, and the way I figure it, you could save anywhere from 10-15 hours of time in the process.

So tell me, Mr. Bravo, why do you do it?

"It's great!" came his response. "It really is."

"It's not the idea of competing against someone else. In fact, it's anything but."



**LOCAL FRONT**  
Greg Greenday

that. You compete against yourself, and no one else. But being out there with all the other guys, you sort of develop a special rapport. After sucking gas and knocking ourselves out, when we're through for the day we all sit around with a beer and talk about how cold the water was or how the bike handled and so on. In a way, we're like a family."

Some family. These guys must be a real blast at a reunion.

But the Ironman competition has, in fact, taken on a larger-than-life quality for Bravo, who has been active in local competitions for the better part of three years now.

"After college, I was living and working in Washington D.C. as a salesman for Proctor & Gamble," he said. "I guess I was getting a little unhappy with my job, so I started running, basically just to stay in shape."

"Before long, I met up with a few guys

who told me the real test of a runner is the marathon. But they figured I was too small to go the distance. Well, that was all I needed to hear. Right then and there, I decided to see what I could do."

What Bravo did, was begin a strenuous training program that included swimming, biking and running.

"I hadn't done any swimming since I was about 11 years old," he said. "During my first few competitions, I was like a stone in the water, but I worked at it."

"Last year, I did three races. The first was down in Baltimore, where the events included a 1,500-meter swim, 40-kilometers on the bike and a 10-K run. My time was two hours and 49 minutes. It wasn't anything to get excited about, but I improved in the next two meets enough to start taking the Ironman seriously."

Over the summer, Bravo averaged two races a month and decided to take a shot at the world championships in Kailua-Kona, Hawaii.

"There are two ways of getting to the world championships," he said. "One is to qualify and the other is the lottery system. I entered the lottery and was put on a waiting list. For the rest of the summer, I really wasn't sure what to expect. I didn't think I would be pushed up the list, but as things turned out, some guys dropped out and others were injured, and the next thing I know I get a call on September 6 — the day before the cutoff date — telling me I was in."

But being "in" was only the half of it.

Now, all Bravo has to do is raise \$3,500 to cover his expenses.

"I've come much too far," said the

former Haverford High quarterback. "I'm not about to let the money stop me. I've paid for everything with my credit card, but the bills will be coming in in a week or two, so I'll have to raise the money anyway I can. I'll probably have a raffle and some wine and cheese affair to help. But I'll work it out. If I didn't raise a dime, all this would still be worth it."

One way or another, Dave Bravo will be there in Hawaii on Oct. 13, for the start of the Ironman. More importantly, he's just as determined to be there for the finish.

"Understand, I'm in no danger of winning," he admitted. "For that matter, I may not be a threat to be among the first 500 finishers. All I want to do is finish."

That's what matters, nothing else.

"The world-class guys are looking at the world record, which is about eight and half hours. But I'm just looking to get in around 15 hours. That would suit me just fine for my first trip."

Obviously, Bravo is a determined young man. And for that very reason, it'll be interesting to see just how well he fares.

"I'll give it my best shot," he said.

"That's all I can do."

But you know these Ironmen guys. Just when you think they've given the last measure of their strength, they somehow find a little more.

I strongly suspect Dave Bravo will fit right into that mold.

...

The Local Front, written by Times Sports Writer Greg Greenday, appears every Monday. To submit items of interest, write to Greg at the Daily Times, 500 Mildred Ave., Primos, Pa. 19018.

The City of Fort Lauderdale  
Presents

The 8th Annual



### TINMAN TRIATHLON

Hosted by Penrod's on the Beach

• 1 Mile Swim • 25 Mile Bike • 6.2 Mile Run

Saturday, December 10, 1988

Fort Lauderdale Beach

Individual and Relay Divisions

For Registration and complete information send SASE to:

Tinman Race  
1101 Bayview Drive  
Fort Lauderdale, Florida  
33308

(305) 566-0622

Grand Prizes - 2 trips for two  
to Paris furnished by



## COULD YOU BEAT THIS MAN ON HIS HOME GROUND?

Peter Kelsick is the first official entry in Antigua's Pineapple Triathlon. He is also the Race Director, and promises that this year's triathlon will reflect all that is demanded from a top level professional event.

Antigua is the home ground, an island of unparalleled beauty, sunsoaked beaches, crystal clear warm water and a population that's courteous and friendly.

December 11th 1988 1:00 p.m. start.

**\$25,000 Purse** guaranteed minimum  
Many other awards and trophies.

Cash and Awards to top 5 Pros, male and female.  
Cash and Awards to age group winners (15-60) every 5 years.  
Cash Awards to top three relay teams.  
Special trophies awarded over all categories.  
Cash and Awards to top Caribbean Triathletes.

All registered athletes will receive:  
• Welcoming Reception  
• Limited edition designer T-shirts  
• Awards banquet  
• Clinics by top pros and medical experts  
• Discounts on water sports activities.  
• Course tours.

Antigua has a major international airport and is serviced by direct flights on a regular basis by the major American, Canadian and European airlines.

• One mile swim  
• 36 mile bike  
• 7 mile run

THE  
PINEAPPLE  
TRIATHLON

Entry Information **ANTIGUA HOSTS TRIATHLON**  
Call or write: Pineapple Productions, P.O. Box 454, St. John's, Antigua, West Indies. Tel: 809-461-0945, Fax: 462-1873.



# TEAM Casual

## Challenges Competitors to "Follow The Leader"

### PAVLOV



"Believe me, all the experts say lower the frontal resistance for more speed."



### NOVEMBER

- 6—Great Gorge Challenge, McAfee, NJ. Reg 9am. Marty's, 173 Speedwell Ave. Morristown, NJ 07960. 201-984-5313 or 538-7773.
- 13—WAGO Cycle Series, Centerport, PA. \$5. Mid Boy Girl 8-11 2.5mi 12:30pm, Int Boy Girl 12-14 5mi 1pm, Jr15-17, Sr18-29, 30-39, Vet40-49, 50-plus 13mi 1:30pm. Precision Road Racing, Schoolside Plaza, PO Box 252, Leesport, PA 19533. 215-376-3987 or 926-4303.
- 13—Endless Mountain Fat Tire Scramble, Binghamton, NY. Advanced, Novice, \$10. 607-723-8731.
- 13—Bobby Phillips Turkey Day Race, Baltimore, MD. Reg 8am. Cit Men 10mi, start 9am, \$7; Mid Boy, Girl 6mi, 9:30, \$8; Cit Wom 7mi, 9:45, \$7; Mas Wom35-Plus 10mi, 10am; Mas Men45-plus 10mi, 10:30; Jr9-11 Boy, Girl 5mi, 10:45; Jr12-13 Boy, Girl 7mi, 11am; Jr14-15 Boy, Girl 10mi, 11:30; G Mas60-plus 6mi, 11:45; Mas Men35-plus 15mi, 12pm; Sr Wom 10mi, 12:30; Jr16-17 Boy, Girl 10mi, 12:50, all \$8; SrIV 14mi, 1:20; SrIII 14mi, 1:45; SrII 25mi, 2:15, all \$9. Bobby Phillips, 24 Windersal Ln, Baltimore, MD 21234. 301-882-9023 eves, or Zay Phillips 296-1391.

Saturdays Nov. 12, 19, 26, Dec. 10—Wakefield Park Cyclocross Series, Annandale, VA. Reg 11am, start 12pm, \$6. SrI-II, SrIII, SrIV, Mas 35, Wom, Jr, one hour-one lap. Whole Wheel Velo, Guilio Porta, 2330 N. Dinwiddle St, Arlington, VA 22207. 703-276-9263.

### TENTATIVE TEAM DELAWARE VALLEY BICYCLE CLUB TIME TRIAL SCHEDULE

OCT 30, 9:15 AM  
NOV 24—Glasgow, Del. 8:30 AM  
DEC 18, 10:15 AM  
JAN 29, 1:00 PM  
FEB: NO TT!  
MAR 5, 1:00 PM  
APR 9, 9:15 AM  
MAY 14, 9:15 AM  
JUN 18, 9:15 AM

### WEAR A HELMET!!

WITHSTAND THE TOUGHEST TEST OF ALL—THE TEST OF TIME!

### WITHSTAND THE TOUGHEST TEST OF ALL—THE TEST OF TIME

### PEPSI FANINI CYCLING CLINIC

BUCKS COUNTY, PA

### BE A PART OF OUR ANNUAL FALL CLINIC!!!

FEATURING  
1982-84 U.S. Professional Champion John Eustice and other members of the Pepsi Fanini Professional Racing Team.

### NOVEMBER 5th and 6th

Emphasis on training, position and technique and component selection. Individual programs and analysis.

FOR INFO CALL:  
215-934-6946 (9AM-8PM EST)

### Trump on wheels

Donald Trump, known for his some-say-ostentatious Trump Tower and for the Trump's Castle Hotel & Casino in Atlantic City, is planning a rolling event to bear his name. The New York Daily News reports that Trump intends to sponsor the Tour de Trump, an eight-day \$250,000 bicycle race bearing some semblance to the Tour de France. The \$50-mile race, to begin sometime in May, would take bikers from the Trump Tower in Manhattan through Baltimore, the Blue Ridge Mountains; Richmond, Va.; Washington, and Philadelphia before finishing at Trump's Castle.

### TEAM DELAWARE VALLEY BICYCLE CLUB (TEAM Casual!) 1988 SPRING-SUMMER TIME TRIAL SERIES RESULTS (POINTS)\*\*

Bud Gerhab	33	Jim Jackson	8	Chris Ward	2
Joe Freiberg	31	Lorne Grout	8	Carm Placido	2
Ed Silcox	27	Anthony Falcone	7	Bob Bonnette	2
Bunky Webb	18	John Sague	6	Michael Weaver	2
Paul McGovern	17	Stu Levy	6	John Gibbons	2
Joe Pless	16	Rich Patterson	6	Woody Kotch	1
Ron Rosati	16	Gibbs Tolsdorf	6	Don Patterson	1
Chris Behr	16	John Kaufmann	6	Mark Spangler	1
Rusty Potts	14	Kathy Ugen	5	Bruce Bowen	1
Cam Marziani	13	Stewart Resnick	5	Andy D'Ascenzo	1
John Freiberg	10	Bob Gallen	5	Craig Pierce	1
Bob Rosati	10	Bill Baratta	5	Kevin Doerr	1
Vince Calkins	10	Jim Nyborg	5	Trip Bowers	1
Cleve Corner	10	Bob Smith	4	Saul Montanez	1
Bob Pitman	9	Tom Nyborg	4	Mike Bufo	1
Kevin Ashbee	9	Matt Hogan	4	Aaron Homjak	1
Dave Morton	9	Matt Valentine	4	Donna Williams	1
		Bill Taylor	3	Steve Overstreet	1
				John Todesco	1

Congratulations to TEAM Casual's RIDER OF THE YEAR: Joe Freiberg who accumulated 31 points. Congratulations also to TEAM Casual's RUNNER-UP RIDER OF THE YEAR: Ed Silcox!

(Also congratulations to overall top point man: Bud Gerhab, who accumulated 33 points.)

10 points were awarded to 1st place, 9 pts. for 2nd, 8 pts. for 3rd, 7pts. for 4th, 6 pts. for 5th, 5 pts. for 6th, 4 pts. for 7th, 3 pts. for 8th, 2 pts. for 9th, & 1 pt. for all other places in each time trial. Time Trials used for scoring were March-September.

Total number of riders: 54

Women's RIDER OF THE YEAR: Kathy Ugen with 5 points!

RUNNER-UP WOMEN'S RIDER OF THE YEAR: Donna Williams

Now that everyone survived TEAM Casual's 1988 Spring/Summer Time Trial Series, we hope to see you at the Delaware Thanksgiving Day 10 Mile Time Trial. Call Rollin' Rich Patterson at 215-622-2954 if you need directions to this major event.

1st National Indoor Bicycle Race on the New Schwinn Velodyne - Official sponsors are Guy's Bicycles (215) 355-1166 and Keswick Cycle (215) 884-6996. The contest will be conducted from November 10 - 20, 1988. Call either sponsor for more details. There will be both national and local prizes!

### BOBBY PHILLIPS 4TH ANNUAL TURKEY DAY BIKE RACE

Quaker City Wheelmen/Chesapeake Wheelmen

WHEN: November 13, 1988

WHERE: LAKE MONTEBELLO, BALTIMORE, MARYLAND

33rd St and Perring Parkway four blocks east of Memorial Stadium. 95 S and N to 695 W to Exit 305 Perring Parkway to 33rd St. left to lake.

COURSE: 1.4 miles/flat/fast

REGISTRATION: 8 A.M. RAIN OR SHINE "SNOW NO RACE"

TOTAL PRIZE LIST: \$5000.00 minimum in merchandise and turkeys, plus prime and cash prizes all day long.

\*USCF approved helmets required for all riders.

\*All entry fees include insurance & USCF District Surcharge

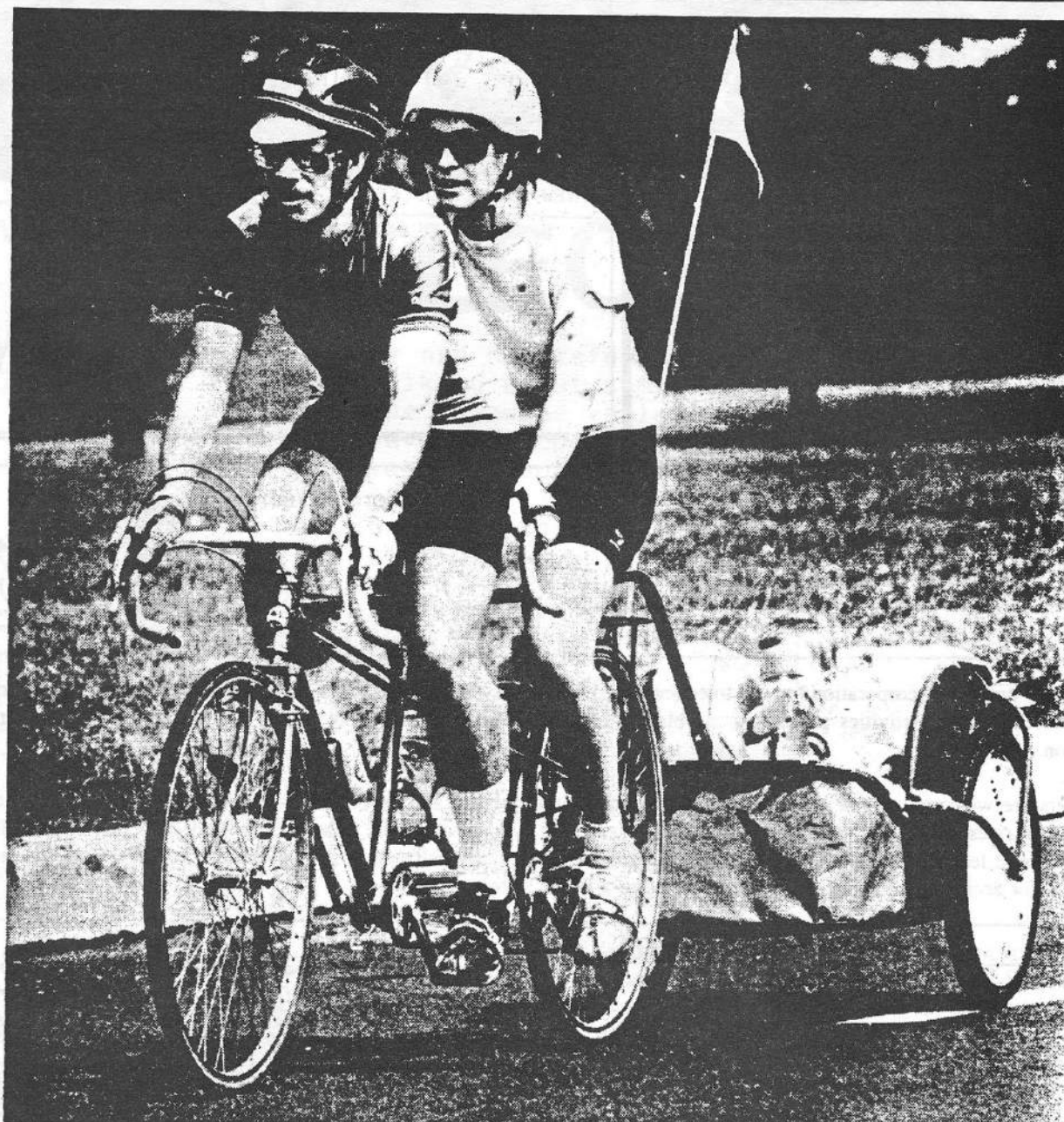
\*\$3.00 Post Entry Fee for all entries received after 11/6/88.

\*Information & Entries - Mail to:

Bobby Phillips, 24 Windersal Ln., Baltimore, Maryland 21234. (301) 882-9023 evenings or Zay Phillips - (301) 296-1391

Use standard entry form/Parents must sign release form for minors.

CLASS	MILES	PLACES	APPROX. TIME	ENTRY FEE
1. Novice Men	10	10	9:00 A.M.	\$7.00
2. Midget Boys & Girls	6	5/2	9:30 A.M.	8.00
3. Novice Women	7	7	9:45 A.M.	7.00
4. Master Women 35 +	10	7	10:00 A.M.	8.00
5. Master Men 45 +	10	8	10:30 A.M.	8.00
6. Junior 9-11 Boys/Girls	5	5/2	10:45 A.M.	8.00
7. Junior 12-13 Boys/Girls	7	7/4	11:00 A.M.	8.00
8. Junior 14-15 Boys/Girls	10	8/5	11:30 A.M.	8.00
9. Grand Master 60 +	6	5	11:45 A.M.	8.00
10. Master Men 35 +	15	12	12:00 Noon	8.00
11. Senior Women	10	10	12:30 P.M.	8.00
12. Junior 16-17 Boys/Girls	10	10/5	12:50 P.M.	8.00
13. Senior IV	14	10	1:20 P.M.	9.00
14. Senior III	14	10	1:45 P.M.	9.00
15. Senior II	25	12	2:15 P.M.	9.00



Staff photo by Glenn Scroggy

## Family enjoys their 'bicycle built for three'

Bike riding is truly a family affair for Richard and Joanne Patterson and their 14-month-old son, Ricky, of Drexel Hill, Pa. Once a month, the Pattersons pack up their wheels — all four of them — and head out to spend an

enjoyable afternoon touring the Swedesboro countryside. The smile on Ricky's face as the trio travels Kings Highway indicates it's great fun to cycle, especially when someone else does all the work.

8/3c/

**FOR SALE:** Gitane tandem. Mixte frame. New rear wheel, rear seat and many mechanical parts. Good mechanical and cosmetic condition. \$600.00 Stuart Blum, 837-4010, Monday-Friday, 9 a.m. to 5 p.m. **AREA CODE: 301**

**FOR SALE:** Gitane Tandem 23x21. Handlebar end shifters. 36/52 chainwheels. Rear freewheel is 14-34. Caliper brakes plus rear hub brakes. \$1100. Russ Payne, Indian Landing C-14, Millsboro, DE 19966. (302)-945-2112 09/88

### TANDEM CALENDAR 88

May 27-29, 1989. **Northwest Tandem Rally, '89.** Bend, OR.

Late July, 1989. **Eastern Tandem Rally, '89.** Elizabethton, PA.

**TANDEMS! TANDEMS! TANDEMS!** Our tandem catalog has all the hard-to-get parts and accessories for tandems. 48-hole wheels, child stoker adaptors, different length cranks, adjustable rear stems. Rodriguez, Santana, Cannondale and Burley tandems available. R + E Cycles, 5627 University Way NE, Seattle, WA 98105. (206) 527-4822.

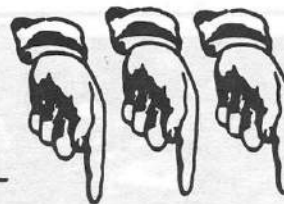
**A BOYFRIEND!** SWF, 31, citizen (long-time tourist, commuter) seeks compatible 30ish SWM for tandem pursuits. Moi: strong, good-looking, above average, eclectic sense of humor. Six bikes—an antique, a folder...even a Bugger. Other (gasp!) interests include traditional music, travel, reading and writing—especially letters. If you're a tall Midwesterner who can dance, please include your photo! PO Box 2566, Ann Arbor, MI 48106.



**DELAWARE VALLEY BICYCLE CLUB**

P.O. Box 497  
Media, PA 19063

**FIRST CLASS MAIL**



**PLEASE  
AFFIX  
POSTAGE**

(NEW SUPPLY OF CLUB T-SHIRTS IS IN!)

Place Label Here

The above mailing label constitutes a DVBC membership card expiring 60 days past postmark.

experience dictates  
the use of helmets



MEETING NOTICE: DO NOT DELAY DELIVERY



The DVBC is a non-profit corporation formed to educate the public as to the safe use of the bicycle through lectures, seminars, planned rides, and other activities promoting the bicycle as an efficient and enjoyable means of exercise, recreation, and transportation.

Non-members are welcome on rides, but are urged to consider their ability and experience when selecting a ride. (See Ride Guidelines.) All rides are subject to cancellation due to weather. If in doubt about the weather or level of difficulty of the ride, please call the ride leader. Though the use of safety equipment, particularly helmets, is strongly urged, the club cannot accept responsibility for accidents or injury while participating in a DVBC event.

**APPLICATION FOR 1989 DVBC MEMBERSHIP**

\*\*\*\*\* (EXPIRES 2/28/90) \*\*\*\*\*

Name: \_\_\_\_\_ Phone: \_\_\_\_\_

Address: \_\_\_\_\_ Age: \_\_\_\_\_

City: \_\_\_\_\_ State: \_\_\_\_\_ Zip: \_\_\_\_\_

Membership Type: ☐ Individual - \$10 ☐ Family - \$14

Membership includes: DVBC Newsletter Magazine, discounts at most Club sponsors, Club subsidized events, and free Bicycle Touring Newsletter published quarterly (\$3 value). Family membership includes two adults and up to two children. Your membership attracts advertisers and helps influence local government decisions concerning bicycle issues.

**INTEREST SURVEY**

**Ride Pace**

- ☐ Class D: slow  
☐ Class C: average  
☐ Class B: brisk  
☐ Class A: fast  
☐ Off-Road

**I'll volunteer for:**

- ☐ Ride Leader  
☐ Sag Wagon Driver  
☐ Tour Food Stop  
☐ Newsletter Editor  
☐ Newsletter Typist
- ☐ Newsletter Collator  
☐ Advertising Coordinator  
☐ Newsletter Co-editor  
☐ Newsletter Delivery  
☐ Triathlon Editor

Please send your check or money order to:

**Delaware Valley Bicycle Club**  
P.O. Box 497  
Media, PA 19063

*The DVBC Safety Foundation is established to promote bicycle safety in the Delaware Valley using posters, flyers, bumper stickers and rewards.*

I wish to donate to the DVBC Safety Foundation:

☐ \$1 ☐ \$2 ☐ \$5 ☐ \$10 ☐ \$15 ☐ \$20 ☐ \$25

**Membership to DVBC Subdivisions**

*You must join the main organization (left half of this form) in order to be able to join a DVBC subdivision.*

☐ \$7.00 DVBC-Team Drexel Hill (Road Racing)  
Drexel Hill Cyclery

☐ \$5.00 Team Delaware Valley Bicycle Club  
Team Casual! (Road Racing)

☐ \$5.00 DVBC Triathlon Div.

☐ \$5.00 DVBC Tandem Div.

\_\_\_\_\_ Total Amount Enclosed